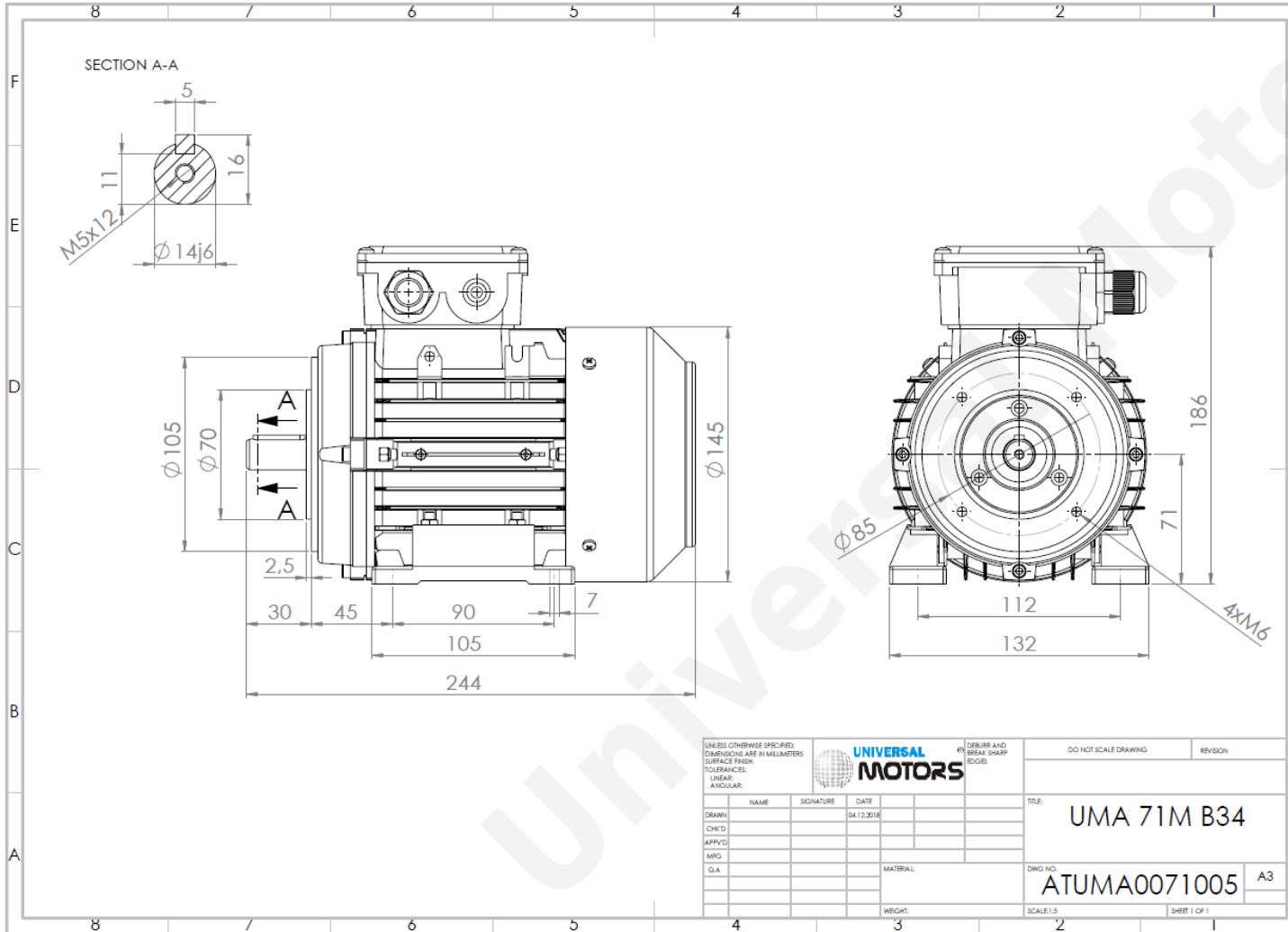




TECHNICAL DATA

Three Phase Electric Motors - Aluminum Frame
 UM2A 71M3-4
 0.55 kW / 0.75 Cv
 1395 RPM



Motor type:	UM2A 71M3-4
Output:	0.55 kW / 0.75 Cv
Speed (min ⁻¹):	1395 RPM
Frequency:	50 Hz
Voltage:	400 V
Current:	1.41 A
Power factor (Cos ϕ):	0.73
Poles:	4
Insulation class:	F
Temperature rise Class:	B
Efficiency 50%:	75.5 %
Efficiency 75%:	77.1 %
Efficiency 100%:	77.1 %
Torque:	3.77 N.m
Tstarting/Tnominal:	2.5
Istarting/Inominal:	4.9
Tmaximum/Tnominal:	2.6
Noise:	57 Db(A)
Weight:	7.5 Kg
Brake AC:	AC2
Torque Brake DC:	4 N.m
Bearing DE:	6202 2Z
Bearing NDE:	6202 2Z
Torque Brake AC:	10 N.m
Brake DC:	REB-05-06

Regime - S1

Altitude - 1000m

Environment Temperature - 40°C

CONTACTS:

UNIVERSAL MOTORS Tel: +351 252 299 080
 Rua de São Brás, 745 Fax: +351 252 299 089
 4480-782 VILA DO CONDE Mail: geral@universalmotors.pt

* References applied only in the UK